

Drive Systems and Heavy Movable Structures



World Largest Bascule Bridge at Barcelona Harbour, Spain



Movable Bridges • Gates • Link Spans





Erasmusbrug, Rotterdam

Over River Maas in the City Centre, Netherlands



Built in 1995, DSD NOELL GmbH supplied and installed 2 hydraulic power units, 4 cylinders 600/400x6940 stroke, max. force per cyl. 5300 KN, locking systems and a control system Telemecanique TS 7.

□ Length of bascule bridge: 56 m

Tarragona Bridge, Spain



In 1999 DSD NOELL GmbH supplied 2 HPU's with 165 KW, 4 cylinder 500/300x4000 stroke, max. force per cyl. 3100 KN 4 pivot bearings 600, locking devices, dampers Control system: Simatic S7-400, Profibus, visualisation

□ Width of bascule bridge opening: 80 m

Este Barrage, Northern Germany

Over River Maas in the City Centre, Netherlands



In 1999 DSD NOELL GmbH supplied 1 hydraulic power unit, 2 cylinder 500/360x10600 stroke, max. force per cyl. 5300 KN 4 cylinder 460/280x7700 stroke, max. force per cyl. 2245 KN 4 cylinder 100/70x1000 stroke, 4 cylinder 100/70x200 stroke and a control system SUCOS PS4

□ Length of bascule bridge: 53 m

Estacio Bridge, Murcia, Spain



In 2002 DSD NOELL GmbH supplied 2 HPU's with 110 KW, 4 cylinder 460/280x3900 stroke, max. force per cyl. 2200 KN 4 Pivot bearings 440, locking devices, dampers Control system: Simatic S7-400, Profibus, visualisation

□ Width of bascule bridge opening: 65 m



**Ferry Landing Bridges,
Yantai, Dalian East-China**
for Railways, Trucks and Passengers



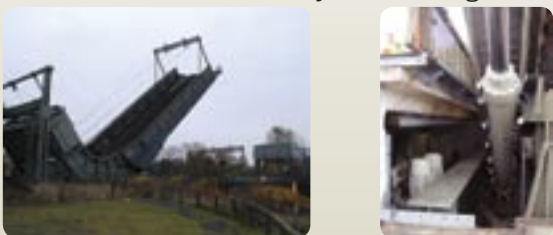
In 2006 DSD NOELL GmbH supplied and installed 2 hydraulic power units with oil conditioning system and oil coolers, 4 centre lifting cylinders Ø700/260x4850 with stroke measuring system and control block, lifting capacity of 6530 kN each. 4 shipside lifting cylinders Ø480/200x7100 with stroke measuring system and control block, lifting capacity of max. 4000 kN each. 4 cylinders with control blocks for rest bars. Plus 16 cylinders for auxiliary functions.

Karun 3, Spillway Radial Gates, Iran
Gate size 15m wide x 20 m high



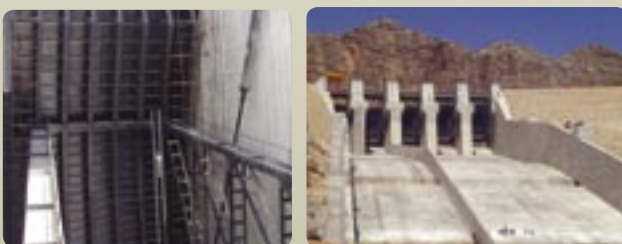
In 2005 DSD NOELL GmbH supplied and installed 2 spillway radial gates, 2 HPUs with 75 KW each, 4 cylinder 520/250x11100 stroke, max. force per cyl. 3500 kN, Control system: Simatic S7-300.

Double Rolling Bridge, Oldenburg Germany
Rehabilitation of Railway Steel Bridge



In 2003 DSD NOELL GmbH supplied and installed, 2 hydraulic power units with 74 KW, 4 cylinder 380/260x3620 stroke, max. force per cyl. 1535 kN. Control system: Simatic, visualisation.

Masjed Suleman, Spillway Drives, Iran



In 1995 DSD NOELL GmbH supplied 1 hydraulic power unit 10 cylinder 420/160x17500 stroke

□ Gate size 15m wide x 20 m high

Vege sack Ped. Bridge, Bremen Germany



In 1999 DSD NOELL GmbH supplied the complete bascule pedestrian bridge including a wire rope hoisting system. The Architecture of this bridge is of extraordinary nature.

□ Bridge opening 19,5 m

New Projects on Hand:

- >>> Double Bascule Bridge ALBATROS in Mexico, Lazaro Cardenas
- >>> Rehabilitation of 34 m Navigation Lock IRON GATES 1 in Romania
- >>> Large Navigation Lock, 40m, with 3 Bascule Bridges, SEVILLA, Spain

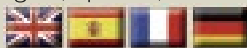


Ioan Gische
Head of Drive Systems Department
ioan.gische@dsd-noell.com



Ralf Roswora
Sales & Marketing Manager
ralf.roswora@dsd-noell.com

We speak English, Spanish, French and German



DSD NOELL GmbH
Geschäftsstelle Würzburg | Alfred-Nobel-Straße 20 | 97080 Würzburg/Germany
Fon: +49 931 903 -12 15 | Fax: +49 931 903 -10 09
info@dsd-steel.com

www.dsd-noell.com